

# Vintage Farmhouse

by Kim Diekl



## Medallion Quilt

Finished Quilt Size: 67½" x 67½"  
A Free Project Sheet from

 Henry Glass & Co. Inc.



49 West 37th Street, New York, NY 10018  
tel: 212-686-5194 • fax: 212-532-3525  
Toll-free: 800-294-9495  
[www.henryglassfabrics.com](http://www.henryglassfabrics.com)

facebook

# MEDALLION QUILT

Finished Quilt Size: 67½" x 67½"

## MATERIALS

- 1 appliqué panel for center medallion block/border corner blocks (6229P-88)
- ⅝ yard each of three assorted neutral prints for patchwork (6230-40, 6232-40, 6234-40)
- 1½ yards of brown stripe for sashing strips (6233-33)
- ⅞ yard of red vine print for patchwork and binding (6228-88)
- 21 fat quarters (18" x 22") of assorted prints for patchwork (6225-11, 55, 88; 6226-11, 33, 66; 6227-11, 44, 66; 6228-22, 66; 6230-22; 6231-11, 30, 88; 6232-33, 77; 6233-55, 88; 6234-66, 99)
- 2¼ yards of 108"-wide Prairie Vine backing print (Kim used 6235-44, tan/multi)
- 1 square, 75" x 75", of batting
- Size 5 embroidery needle and No. 12 perle cotton in a neutral color (optional for hand quilted accents)
- Basic quilting supplies

## CUTTING

Please cut all pieces across the width of the fabric in the order given, unless otherwise noted.

**From the appliqué panel, cut the following pieces exactly on the dashed lines:**

- 1 large center medallion block
- 4 small border corner blocks

**From the brown stripe, cut:**

- 4 strips, 2" x 21½" (inner sashing)
- 8 strips, 1½" x 24½" (middle sashing)
- 8 strips, 2" x 32½" (outer sashing)

**From the red vine print, cut:**

- 8 squares, 2" x 2"
- 8 strips, 2½" x 40" (binding)

Reserve the remainder of the print.

**From the 21 assorted print fat quarters and the remainder of the red vine print, cut a combined total of:**

- 27 squares, 5¼" x 5¼"; cut each square in half diagonally once to yield a total of 54 triangles.

(Note: Kim cut one 5¼" square from each of the 21 fat quarters and the red vine print, and then chose her five favorite prints, cutting one additional square from each to bring her total number of 5¼" squares to 27.)

- 54 setting squares, 4½" x 4½"
- 44 rectangles, 4½" x 7½"
- 8 rectangles, 2½" x 7½"

**From each of the three neutral prints, cut:**

- 9 squares, 5¼" x 5¼" (combined total of 27); cut each square in half diagonally once to yield a total of 54 triangles.
- 32 squares, 2½" x 2½" (combined total of 96)

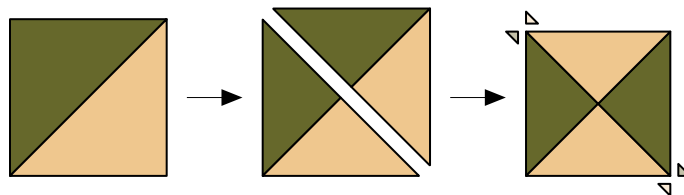
## PIECING THE CENTER MEDALLION UNIT

Sew all pieces with right sides together and a ¼" seam allowance unless otherwise noted.

1. Join a brown stripe 2" x 21½" strip to two opposite sides of the center medallion square. Press the seam allowances toward the brown stripe.
2. Stitch a red vine print 2" square to each end of the remaining brown stripe 21½" strips. Press the seam allowances toward the brown stripe. Join these pieced strips to the remaining sides of the medallion square. Press the seam allowances away from the medallion.

## PIECING THE HOURGLASS BLOCKS

1. Select two matching assorted print triangles and two matching neutral print triangles. Join an assorted print and a neutral print triangle together along the long diagonal edges. Repeat to make two pieced half-square-triangle units. Press the seam allowances toward the assorted prints. Trim away the dog-ear points.
2. Use a rotary cutter and an acrylic ruler to cut the half-square-triangle units in half diagonally through the sewn seams. Join two of the resulting pieced triangle units together to make an Hourglass block. Press the seam allowances open. Trim away the dog-ear points. Repeat for a total of two identically-colored blocks measuring 4½" square, including the seam allowances.

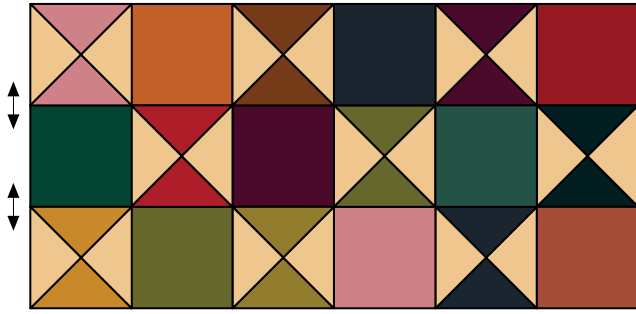


3. Repeat steps 1 and 2 to make a total of 54 Hourglass blocks.

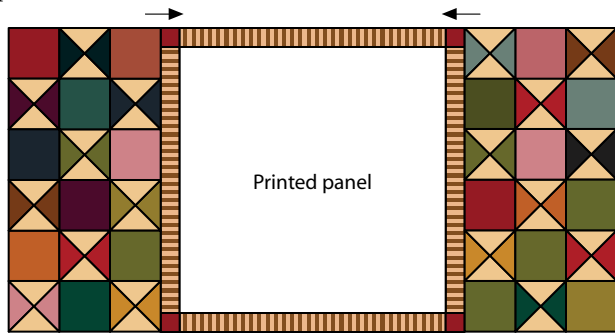
## PIECING AND ASSEMBLING THE HOURGLASS SECTION

1. Beginning with an Hourglass block, alternately lay out six blocks and six assorted print setting squares. Join the pieces. Press the seam allowances toward the setting squares. Repeat for a total of six pieced rows.
2. Referring to the pictured quilt, lay out three of the pieced rows from step 1, reversing the direction of the middle row. Join the rows. Press the seam allowances open. Repeat for a total of two pieced long Hourglass units.
3. Beginning with an Hourglass block, alternately lay out three blocks and three assorted print setting squares. Join the pieces. Press the seam allowances toward the setting squares. Repeat for a total of six pieced short rows.

- Lay out three of the pieced short rows from step 3, reversing the direction of the middle row as shown. Join the rows. Press the seam allowances open. Repeat for a total of two pieced short Hourglass units.



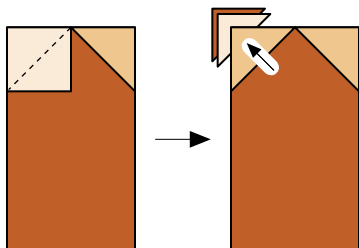
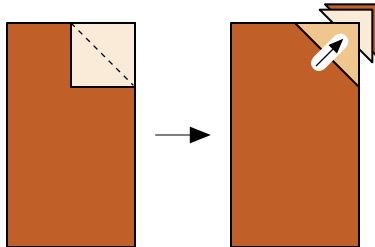
- Join a short Hourglass unit to the right and left sides of the quilt center as shown. Press the seam allowances toward the quilt center.



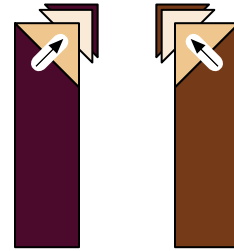
- Referring to the quilt, join a long Hourglass unit to the remaining sides of the quilt center. Press the seam allowances toward the quilt center.

### PIECING THE RECTANGLE BORDER

- Use a pencil and an acrylic ruler to lightly draw a diagonal sewing line from point to point on the wrong side of each neutral print  $2\frac{1}{2}$ " square.
- Layer a prepared neutral square over one corner of an assorted print  $4\frac{1}{2}$ " x  $7\frac{1}{2}$ " rectangle. Stitch the pair together on the drawn line. Press the inner corner of the stitched square open to form a triangle, aligning the edges with the edges of the rectangle. Use a rotary cutter and an acrylic ruler to trim away the excess layers beneath the top triangle, leaving a  $\frac{1}{4}$ " seam allowance. Repeat for a total of 44 pieced rectangle segments.
- Repeat step 2 to join an additional neutral 2" square to each pieced rectangle segment, positioning it to form a mirror-image triangle. Repeat for a total of 44 pieced rectangle units.



- Layer and stitch a prepared neutral print  $2\frac{1}{2}$ " square to one end of an assorted print  $2\frac{1}{2}$ " x  $7\frac{1}{2}$ " rectangle. Press and trim as instructed in step 2. Repeat for a total of four narrow rectangle units and four narrow mirror-image rectangle units.



- Referring to the pictured quilt, join 11 pieced rectangle units from step 3. Press the seam allowances open. Repeat for a total of four pieced rectangle rows.
- Using the pictured quilt as a guide, join a narrow rectangle unit and a narrow mirror-image rectangle unit to each end of the four pieced rectangle rows. Press the seam allowances open.

### ADDING THE RECTANGLE BORDER AND SASHING ROWS

- Join two brown stripe  $1\frac{1}{2}$ " x  $24\frac{1}{2}$ " strips together end to end. Press the seam allowances open. Repeat for a total of four pieced strips measuring  $48\frac{1}{2}$ " in length, including the seam allowances.
- Join a pieced strip from step 1 to the assorted print edge of each pieced rectangle row to make a pieced border unit. Press the seam allowances toward the stripe.
- Join a pieced border unit to the right and left sides of the quilt top. Press the seam allowances away from the quilt center. Join an appliqué square to each end of the remaining pieced border units. Press the seam allowances toward the appliqué squares. Join these units to the remaining sides of the quilt top. Press the seam allowances away from the quilt center.
- Repeat step 1 using the brown stripe  $32\frac{1}{2}$ " strips to make four pieced strips measuring  $64\frac{1}{2}$ " in length. Join a pieced strip to the right and left sides of the quilt top. Press the seam allowances toward the stripe. Join a red vine print 2" square to each end of the remaining pieced strips. Press the seam allowances toward the stripe. Join these strips to the remaining edges of the quilt top. The pieced quilt top should now measure  $67\frac{1}{2}$ " square, including the seam allowances.

### COMPLETING THE QUILT

Layer the quilt top, batting, and backing. Quilt the layers. To enhance the hand-appliquéd look of this project, Kim suggests using Valdani Thread's No. 12 perle cotton in color H212, Heirloom Brown, and a size 5 embroidery needle to outline the appliqué design using a running stitch. Join the red vine print  $2\frac{1}{2}$ " x 40" strips into one length and use it to bind the quilt.

# Vintage Farmhouse

*Fabrics in the Collection*



6229P-88



6225-11



6225-55



6225-88



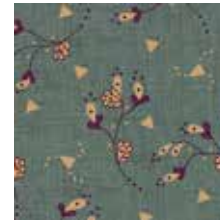
6226-11



6226-33



6226-66



6227-11



6227-44



6227-66



6228-22



6228-66



6228-88



6230-22



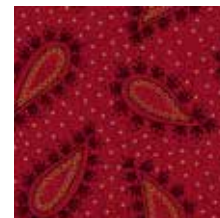
6230-40



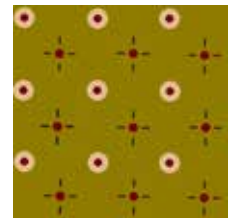
6231-30



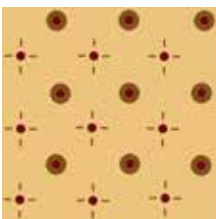
6231-77



6231-88



6232-33



6232-40



6232-77



6233-33



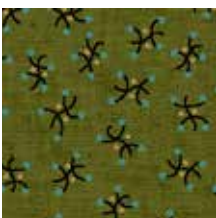
6233-55



6233-88



6234-40



6234-66



6234-99



6235-11



6235-40



6235-44



6235-66

## INTRODUCING PRAIRIE VINE 108" QUILT BACKINGS

# Vintage Farmhouse

by Kim Diehl



## Patchwork Quilt and Table Runner

Finished Quilt Size: 62½" x 62½"

Finished Table Runner Size: 12½" x 36½"

A Free Project Sheet from



Henry Glass & Co., Inc.



49 West 37th Street, New York, NY 10018

tel: 212-686-5194 • fax: 212-532-3525

Toll-free: 800-294-9495

[www.henryglassfabrics.com](http://www.henryglassfabrics.com)

facebook

# PATCHWORK QUILT and TABLE RUNNER

Finished Quilt Size: 62½" x 62½"

Finished Table Runner Size: 12½" x 36½"

## MATERIALS

Please note that the prints listed below will provide enough yardage to make the blocks required for the large quilt, with four unused blocks remaining to make the bonus table runner.

- ½ yard each of three assorted neutral prints for patchwork (6230-40, 6232-40, 6234-40)
- 1 yard of red vine print for patchwork and binding (6228-88)
- 20 fat quarters (18" x 22") of assorted prints for patchwork (6225-11, 55, 88; 6226-11, 33, 66; 6227-11, 44, 66; 6228-22, 66; 6230-22; 6231-11, 30, 88; 6232-33, 77; 6233-55, 88; 6234-66)
- 1½ yards of black print for border (6234-99)
- ⅞ yard of brown stripe for border (6233-33)
- 2 yards of 108"-wide Prairie Vine backing print (Kim used 6235-66, green); reserved scraps can be used for table runner backing
- 1 square, 69" x 69", of batting for large quilt
- 1 rectangle, 19" x 43", of batting for table runner
- Basic quilting supplies

## CUTTING

Please cut all pieces across the width of the fabric in the order given, unless otherwise noted.

### From each of the 20 assorted print fat quarters, cut:

9 squares, 4½" x 4½" (combined total of 180)

8 squares, 2½" x 2½" (combined total of 160)

Keep the pieces grouped together by print.

### From each of the three neutral prints, cut:

6 strips, 2½" x 40"; crosscut into 80 squares, 2½" x 2½" (combined total of 240)

### From the red vine print, cut:

4 strips, 1½" x 40"; crosscut into 80 squares, 1½" x 1½"

7 strips, 2½" x 40" (binding – large quilt)

3 strips, 2½" x 40" (binding – table runner)

### From the black print, cut:

8 strips, 2½" x 24½" (side borders)

4 strips, 1½" x 24½" (side borders)

8 strips, 2½" x 31½" (top/bottom borders)

4 strips, 1½" x 31½" (top/bottom borders)

### From the brown stripe, cut:

8 strips, 1½" x 24½" (side borders)

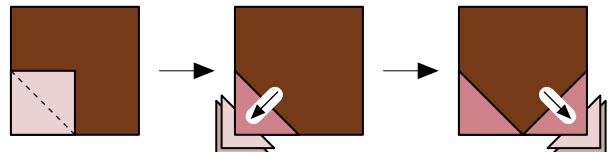
8 strips, 1½" x 31½" (top/bottom borders)

## PIECING THE BLOCK STAR-POINT UNITS

Sew all pieces with right sides together and a ¼" seam allowance unless otherwise noted.

1. Use a pencil and an acrylic ruler to lightly draw a diagonal sewing line from point to point on the wrong side of each assorted print 2½" square.
2. Select a set of eight prepared 2½" squares cut from one print. Next, select eight 4½" squares cut from a coordinating print to make the darker portion of the block's background units.
3. Layer a prepared square over one corner of a background print 4½" square. Stitch the pair together on the drawn line. Press the inner corner of the stitched square open to form a triangle, aligning the edges with the bottom edges of the square. Use a rotary cutter and an acrylic ruler to trim away the excess layers beneath the top triangle, leaving a ¼" seam allowance. Repeat on an adjacent corner to make a mirror-image star point. Repeat for a total of four star-point units.

Reserve the four remaining background print 4½" squares from each set.

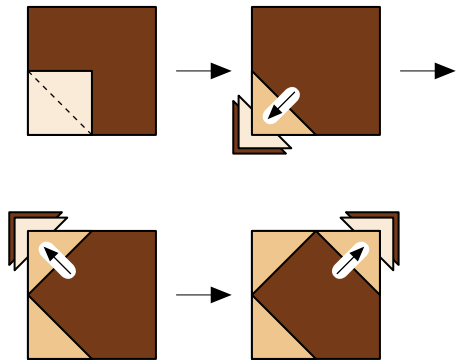


4. Repeat steps 2 and 3 to make 20 sets of pieced star-point units, with each set from a different color combination.

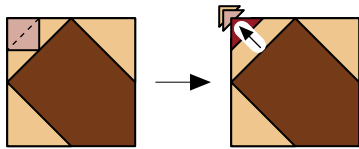
## PIECING THE BLOCK CORNER UNITS

1. Use a pencil and an acrylic ruler to lightly draw a diagonal sewing line from point to point on the wrong side of each assorted neutral print 2½" square. Repeat using the red vine print 1½" squares.
2. Select a reserved set of 4½" squares cut from one background print. Layer a prepared 2½" neutral square over one corner of a background print 4½" square. Stitch, press, and trim the pair to make a

triangle corner as instructed in step 3 above. Next, stitch, press and trim a triangle onto the two adjacent corners of the square. Repeat for a total of four pieced background units.



3. Layer a prepared red print  $1\frac{1}{2}$ " square over the middle neutral corner of a pieced background unit. Stitch, press, and trim as previously instructed.



4. Repeat steps 2 and 3 to make 20 sets of completed corner units, with each set from a different color combination.

## PIECING THE BLOCKS

Select a matching set of star-point units, a  $4\frac{1}{2}$ " square that matches the star points, and a matching set of completed corner units. Lay the pieces out in three horizontal rows to form a block. Join the pieces in each row. Press the seam allowances open. Join the rows. Press the seam allowances open. Repeat for a total of 20 pieced blocks measuring  $12\frac{1}{2}$ " square, including the seam allowances.

## ASSEMBLING THE QUILT CENTER

Lay out the blocks in four rows of four blocks. When you are please with the arrangement, join the blocks in each horizontal row. Press the seam allowances open. Join the rows. Press the seam allowances open.

*Note: You'll have four unused blocks after piecing the quilt center. These blocks have been included to give you added versatility as you arrange your colors. The remaining blocks can be used to piece the bonus table runner.*

## PIECING AND ADDING THE BORDERS

1. Join two brown stripe  $1\frac{1}{2}$ " x  $24\frac{1}{2}$ " strips end to end. Press the seam allowances open. Repeat for a total of two pieced side border strips measuring  $48\frac{1}{2}$ " in length, including the seam allowances. In the same manner, use the brown stripe  $1\frac{1}{2}$ " x  $31\frac{1}{2}$ " strips to make two pieced top/bottom border strips measuring  $62\frac{1}{2}$ " in length.
2. Referring to step 1, use the black print  $2\frac{1}{2}$ " x  $24\frac{1}{2}$ " strips to make four  $48\frac{1}{2}$ "-long pieced wide side border strips. Repeat using the black print  $1\frac{1}{2}$ " x  $24\frac{1}{2}$ " strips to make two pieced narrow side border strips measuring  $48\frac{1}{2}$ " in length.
3. Repeat step 2 using the black print  $2\frac{1}{2}$ " x  $31\frac{1}{2}$ " strips to make four pieced wide top/bottom border strips,  $62\frac{1}{2}$ " long. Last, use the black print  $1\frac{1}{2}$ " x  $32\frac{1}{2}$ " strips to make two pieced narrow top/bottom border strips.
4. Referring to the pictured quilt, lay out two wide black print border strips, one narrow black print border strip, and two brown striped border strips, all measuring  $48\frac{1}{2}$ " in length. Join the strips. Press the seam allowances toward the black print. Repeat for a total of two side border units. Join these units to the right and left sides of the quilt center. Press the seam allowances toward the black print.
5. Repeat step 4 using the  $62\frac{1}{2}$ " strips to make two top/bottom border units. Join these units to the remaining sides of the quilt center. The pieced quilt top should now measure  $62\frac{1}{2}$ " square, including the seam allowances.

## COMPLETING THE QUILT

Layer the quilt top, batting, and backing. Quilt the layers. Join seven red vine print  $2\frac{1}{2}$ " x 40" strips into one length and use it to bind the quilt.

## Bonus Table Runner

1. To make the table runner, select three of the four remaining pieced blocks (or, for a longer table runner, use all four!). Join the blocks end to end. Press the seam allowances open.
2. Layer the quilt top, batting, and backing. Quilt the layers. Join three red vine print  $2\frac{1}{2}$ " x 40" strips into one length and use it to bind the quilt.

# Vintage Farmhouse

*Fabrics in the Collection*



6229P-88



6225-11



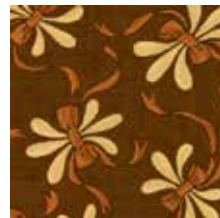
6225-55



6225-88



6226-11



6226-33



6226-66



6227-11



6227-44



6227-66



6228-22



6228-66



6228-88



6230-22



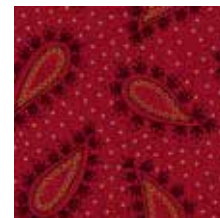
6230-40



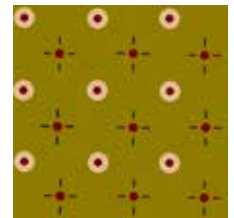
6231-30



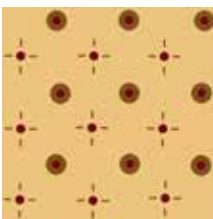
6231-77



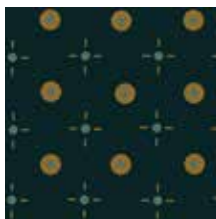
6231-88



6232-33



6232-40



6232-77



6233-33



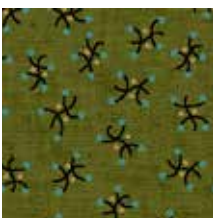
6233-55



6233-88



6234-40



6234-66



6234-99



6235-11



6235-40



6235-44



6235-66

## INTRODUCING PRAIRIE VINE 108" QUILT BACKINGS